

General Specifications	
Type	Digital Retinal Camera, Non-Mydriatic
Photography Modes	Color, Fundus Autofluorescence (FAF), Digital Red-Free, Digital Cobalt
Auto Function	Auto Exposure (AE) / Auto Focus (AF) / Auto Shot (AS) / Auto Switching between Anterior Eye and Fundus
Fundus Imaging	Dedicated Digital Camera with Rear LCD Display
Angle of Photographed	45° (SP mode: 35°)
Minimal Pupil Size	φ4.0 mm (φ3.3 mm in SP mode)
Magnification	2X (Digital)
Mounted Digital Camera	Dedicated Digital Camera by Canon EOS Technology
Sensor Resolution	Approx. 18.0 Megapixels
Diopter Compensation Range	Without Compensation Lens: -10 to +15 D / With (-) Compensation Lens: -31 to -7 D / With (+) Compensation Lens: +11 to +33 D
Operation Distance	35 mm
Focus Adjustment	Alignment of Split Lines
Working Distance Adjustment	Anterior Observation: Double Image Match Method / Fundus Observation: Working Distance Dots
Internal Eye Fixation	LED Dot Matrix
Observation Light Source	Infrared LED
Photography Light Source	Xenon Tube
Movement Range	Stage: Front and Back: 70 mm / Left to Right: 100 mm / Up and Down: 30 mm
Operating Environment:	Temperature: 10°C to 35°C / Humidity: 30%RH to 90%RH
Dimensions (WxDxH)	305 mm x 500 mm x 513 mm
Weight	Approx. 19.9 kg

Instant Preview via the Observation Monitor **NEW**

The instant preview on the rear display on the observation monitor allows you to check the photographed images taken by the camera without altering your line of sight.



An example of the preview image

Specifications are subject to change without notice. Names of companies or products appearing in this document are trademarks and/or registered trademarks of their respective owners.



CANON INC. MEDICAL EQUIPMENT GROUP
30-2, Shimomaruko 3-chome, Ohta-ku, Tokyo 146-8501, Japan
Telephone: +81-3-3757-8497 Fax: +81-3-5482-3960
<http://cweb.canon.jp/product/medical/index.html>

CANON (CHINA) CO, LTD. Medical Equipment Products Division
15F Jinbao Building No.89 Jinbao Street, Dongcheng District, Beijing 100005, China
Telephone: (86) 10-8513-9999 Fax: (86) 10-8513-9914
<http://www.canon.com.cn/products/medical/index.html>

CANON SINGAPORE PTE. LTD. Medical Equipment Dept.
1 HarbourFront Avenue, #04-01 Keppel Bay Tower, Singapore 098632
Telephone: +65-6796-3549 Fax: +65-6271-4226
<http://www.canon.com.sg/business/products/ophthalmic-equipment>

CANON KOREA BUSINESS SOLUTIONS INC. MEDICAL EQUIPMENT BUSINESS TEAM
#168-12, Samseong-dong, Gangnam-gu, Seoul, Korea
Telephone: +82-2-3450-0639 Fax: +82-2-3456-0655
<http://www.canon-bs.co.kr>

CANON AUSTRALIA PTY. LTD. Optical Division
1 Thomas Holt Drive, North Ryde, Sydney, NSW 2113, Australia
Telephone: +61-2-9805-2000 Fax: +61-2-9805-2444
<http://www.canon.com.au/Professional/Medical>



Digital Retina Camera CR-2 PLUS AF Digital Retinal Camera



Featuring an Auto Focus System and Many Other New Enhancements

Non-Mydriatic Digital Retinal Camera

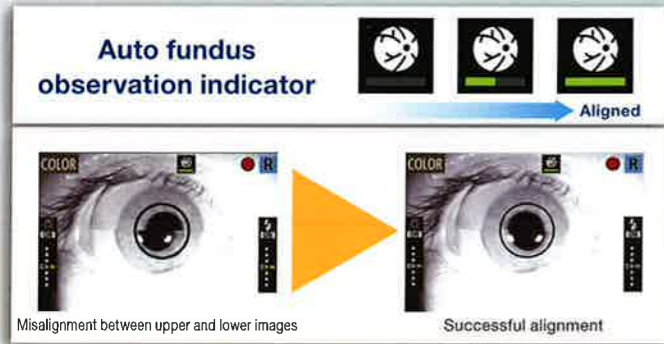


NEW FUNCTIONS

The CR-2 Plus AF is a new non-mydratic digital retina camera that adds auto focus and auto shot capabilities to the standard FAF function for faster and easier high-resolution retinal imaging.

Adjust eye position

Software aligns upper and lower images for optimal positioning.



Automatic switching to fundus imaging

Anterior image is switched to the fundus preview immediately after alignment.



Automatic switching to fundus imaging

Fundus observation

Anterior observation

Select either manual, automatic or anterior/fundus image switching mode

NEW

The joystick makes it easy to switch between automatic and manual focusing. Select the mode that you want by simply pressing the alignment button on the joystick.

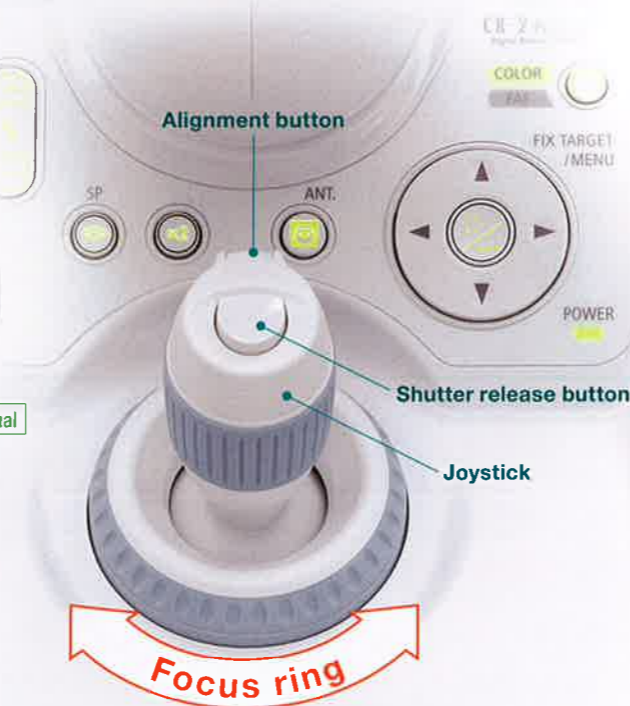
Procedures

Manual → Half-press the shutter release button for 0.3 seconds → Auto → Turn the focus ring → Manual

Newly designed joystick improves operability

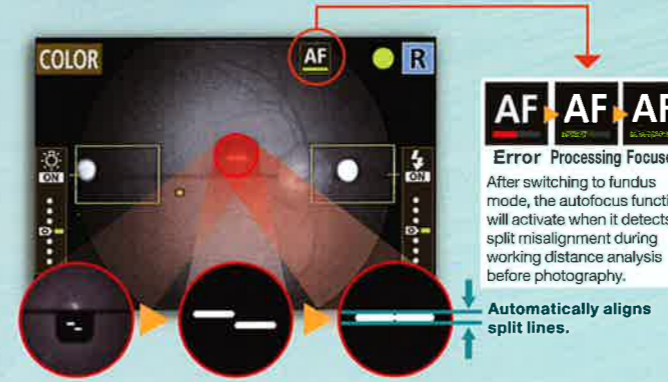
UP

The newly designed joystick makes it easier to make fine adjustments for accurate positioning.



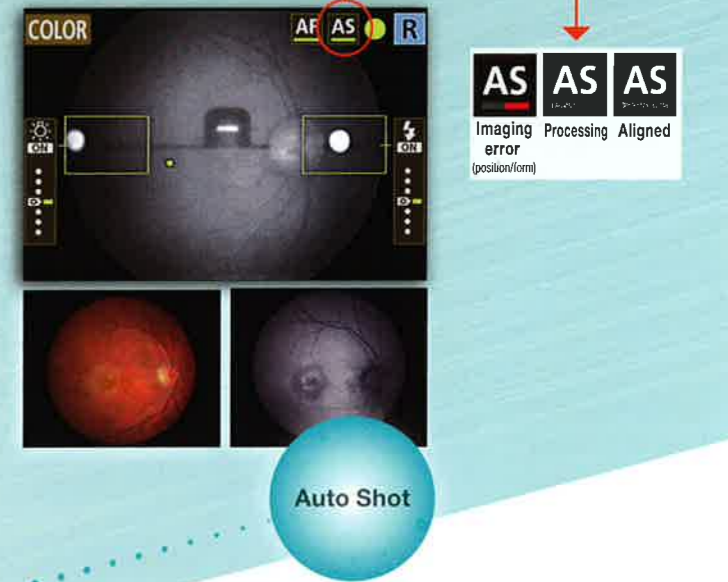
Auto Focus

After switching, the split lines are turned into a single straight line automatically.



Auto Shot

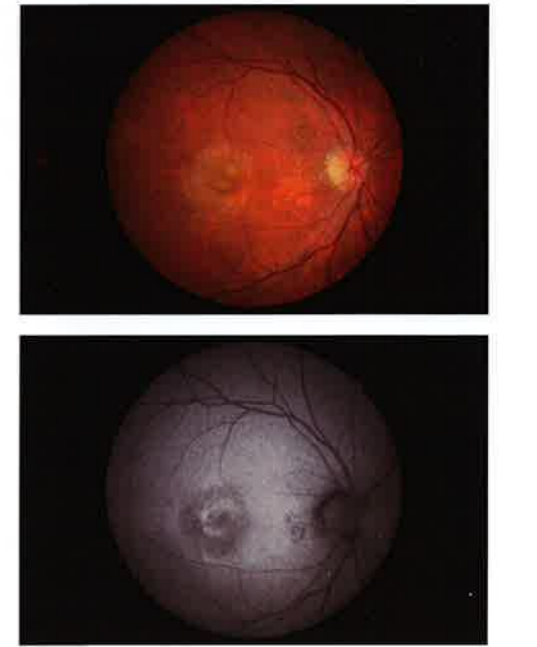
The CR-2 Plus AF achieves simple photography at the right timing by automatically shooting immediately after Auto Exposure, Auto Focus and working distance adjustments.



The FAF auto shot function

UP

FAF provides a non-invasive way of examining the accumulation of autofluorescent lipofuscin in the retinal pigment epithelium, which is highly useful in screening for macular disorders such as age-related macular degeneration. The CR-2 Plus AF adds a new FAF Auto Shot function for easier FAF imaging to enhance the diagnosis capability.



Simple programming of interior eye fixation lamp shifting preset

NEW

The CR-2 Plus AF can store up to four interior eye fixation shifting patterns with up to nine points for each pattern. In other words, you can program the fixation lamp in advance to automatically target macula or optic disk according to user's preference.

- Stores up to four internal eye fixation lamp tracking patterns
 - * with each pattern consisting of up to nine points
- Select fixation patterns on the alignment monitor.
- Auto focus and auto shot functions available for fixation tracking photography



Settings



Menu screen on the rear display



Fundus image during fixation shifting